


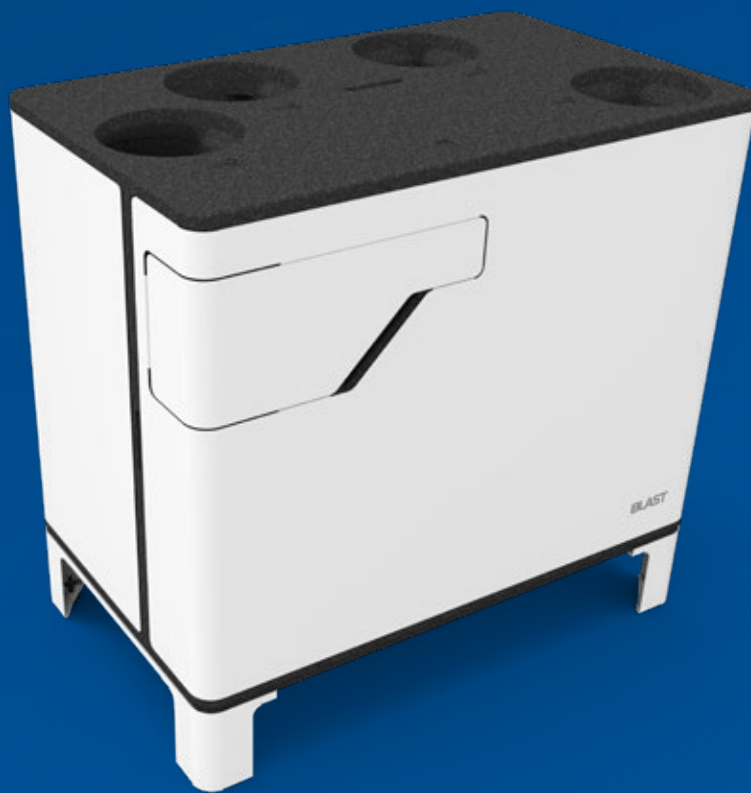


Klimör

BLAST

Air handling unit with cross-flow heat exchanger for heat recovery

 SIZES:	2	 NOMINAL CAPACITIES:	360 • 630 m ³ /h
		 EXTERNAL PRESSURE:	150 • 150 Pa



Basic functions



Optional functions



PLUG & PLAY
READY



Features:

Casing 1

Insulation – EPP: elimination of thermal bridges

RAL 9010 coated galvanized sheet metal

Dedicated inspection panels for easy filter replacement

Equipped with a wall mounting bracket and support legs in the standard version. Support legs in the DECOR version are optional.

Heat recovery 2

Condensing or enthalpy counterflow recuperator

100% by-pass

Free-cooling function

Innovative defrosting system based on detection of pressure increase on the exchanger

Fans 3

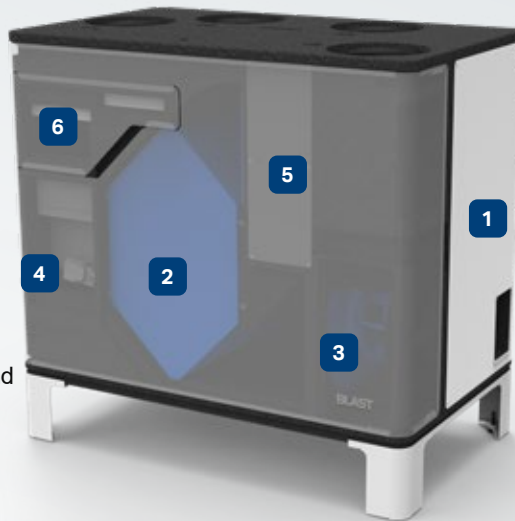
High efficiency EC motors

Maintaining a constant flow independently for supply and exhaust air (option)*

Heater 4

Electric pre-heater, integrated

Stepless adjustment with PWM signal



Filters 6

ePM₁₀50% (M5) as standard supply/exhaust air

ePM₁55% (F7) as an option for air supply

Control panel

Indoor Standard

Touch HMI - Advance

Operating modes – economy, comfort, intensive, calendar (automatic)

Usage modes – vacation (going out), hood, fireplace, airing

Sensible heat recovery monitoring (option)*

Built-in Wi-Fi module

Alarm monitoring

Monitoring of electricity consumption (optional)*

Volume and mass efficiency readings (optional)*

Automation 5

Integrated

Connection to peripheral elements

Connection to CO₂, PM, VOC, HR sensors

Communication

Wi-Fi

Modbus RTU (RS-485)

BASIC TECHNICAL DATA



Parameters	BLAST 360	BLAST 360E	BLAST 630	BLAST 630E	
Rated air efficiency at external pressure 150 Pa	360 m ³ /h	360 m ³ /h	630 m ³ /h	630 m ³ /h	
Heat exchanger	Calculated heat exchanger efficiency**	91.8 %	83.1 %	90.8 %	
	Moisture recovery efficiency**	—	69,10	—	
	Exchanger efficiency according to PN-EN 308	83.5 %	80.1 %	81.6 %	77.10 %
Electrical specification	Fan power	2 x 86 W	2 x 86 W	2x170 W	
	Maximum power of the electric heater	1200 W	1200 W	1700 W	1700 W
	Supply voltage	230 V; 50 Hz	230 V; 50 Hz	230 V; 50 Hz	230 V; 50 Hz
Device dimensions	Height H	755 mm	755 mm	755 mm	755 mm
	Depth W	570 mm	570 mm	570 mm	570 mm
	Width L	935 mm	935 mm	935 mm	935 mm
	Net weight	50 kg	49 kg	51 kg	50 kg
Duct outlets	Ø 200 mm	Ø 200 mm	Ø 200 mm	Ø 200 mm	

* Optional pressure transducer required

** For parameters: outdoor air -20°C/90%, exhaust air 22°C/50%